

HITACHI

Reliable Solutions

Hitachi wheel loader buckets

Fit the best attachment for your application



A perfect fit for your Hitachi wheel loader

The bucket of your Hitachi wheel loader is essential to its performance. Designed to work in harmony with your machine, Hitachi attachments are manufactured to the highest quality and deliver exceptional reliability to maximise productivity and uptime. This means increased profitability for your business and peace of mind that you're getting the most from your Hitachi machine.



Demand the right tool for the job

You need versatility from your Hitachi wheel loader and your choice of bucket has a role to play. As different jobs require different attachments, Hitachi has a range of buckets that can be customised to meet your needs and to suit various operating conditions.



A bucket for every job site

Whatever you need to load and wherever the job site, Hitachi can offer you the ideal attachment for your wheel loader. Manufactured by a leading European supplier with decades of industry experience, its range of buckets offer the same high standards of reliability and durability that you'd expect from Hitachi construction equipment.

No compromise on quality

Hitachi wheel loaders can work in demanding and uncompromising environments, and they need buckets with the capabilities to match. The Hitachi range is produced by experienced design engineers and highly skilled welders, working both manually and with the most advanced robotic welders in the market, to ensure the highest possible quality.



Choose your bucket



General purpose bucket

Designed to be a good overall wheel loader bucket, this is suitable for many applications and various tasks. It can be made with either a flat or round floor, depending on your requirements. It can be made with both convex or straight sides, and is made with Hardox® back and sides, as standard.



Rock bucket

Typically used in quarries and mines, this bucket is designed for heavy-duty work and loading of rocks. It is optimised for good penetration and breakout performance. It usually has a spade nose or straight lip, and concave sides, depending on requirements. It is made of reinforced steel with Hitachi wear parts and Hardox® back and sides, as standard.



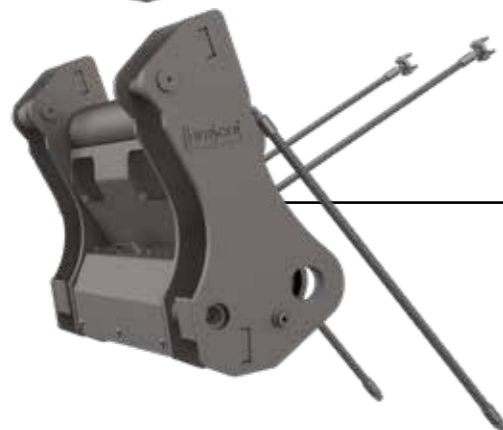
High dump bucket

Ideal for loading high on road trucks or hoppers. This bucket is commonly used for moving light materials like compost, woodchips, waste and coal, etc, and is made with Hardox® back and sides, as standard. You can choose two options: side-mounted or centre-mounted cylinders. Depending on the density of the material your dealer can advise the right option.



Light material bucket

High-volume bucket for efficient handling of light materials such as wood chips, compost, waste, and coal. It is made of reinforced steel with Hitachi wear parts and Hardox® back and sides, as standard.



Coupling

The ISO quick coupling system allows the operator to quickly and easily connect the bucket to the Hitachi machine.

A solution for all job sites

Suitable for loading light materials, heavy-duty work in mines and quarries, and everything in between, Hitachi buckets can be customised to suit a variety of applications and meet the needs of your business. Your Hitachi dealer can configure a bucket tailored to your application, with a variety of selectable options as shown below.

Bucket floor types



Round floor
An all-round bucket often used for re-handling of aggregates or working on harder terrain.



Flat floor
Often used within the earthmoving and landscaping industry. Used for stripping top soil, cleaning or levelling working areas.

Spill guard types



Integrated spill guard plus V-Guard
Standard choice suitable for most applications.



Spill guard with vision slots
Used for high-capacity light material buckets, where visibility is restricted. Also used for high dump buckets or when operators would like better visibility.



Tube style spill guard
Typically used for a rock bucket or recycling and waste handling buckets.



Enlarged spill guard
Used with materials that can achieve high fill factor, to prevent spilling over the back of the bucket.



Hood type spill guard
Additional protection for bucket cylinder without adding volume or weight to the bucket.

Side cutter shape



Straight
Ideal choice for most digging, excavation and earthmoving applications.



Convex (curved outwards)
Light material, or material with a small angle of repose for efficient loading, such as dry sand, woodchips, grain and gravel. Increases volume by approximately 3%.



Concave (curved inward)
Typically used for a rock bucket (material size larger than 150mm).

Side wear plates



Standard
Optimum all-round choice.

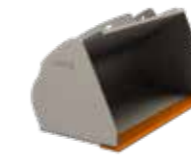


HD
Suitable for abrasive applications.



None
Typical for high dump buckets used for lightweight, loose and non-abrasive material.

Base lip

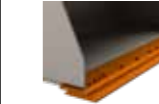


Straight lip
Suitable for most applications, high breakout force and good dumping clearance.

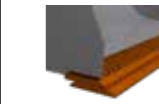


Spade nose / Delta lip
Often found on rock buckets for good penetration in stones, but offers reduced breakout force and dumping clearance.

Wear parts



Bolt-on cutting edge
Three-piece bolt-on cutting edge with reversible centre edge and 4 x reversible corner edges.



Countersunk bolt-on cutting edge
Countersunk alternative of bolt-on cutting edge.



Weld-on half arrow
Suitable for smaller machines less than 15 tonnes, and for use with light material and high dump bucket where minimum wear is expected.



Weld-on teeth
Hitachi flush-mounted adapters for good penetration, keeps the working floor clean and flat. Ideal for digging compacted material from a bench, or loose and blasted material bigger than 40mm.



Bolt-on segments between weld on teeth
Used for additional protection of the base edge.

HITACHI

Reliable Solutions

To find out more about buckets for Hitachi wheel loaders, please contact your local dealer or visit

www.hitachicm.eu



© Hitachi Construction Machinery (Europe) NV (HCME).
All rights reserved. Reproduction in whole or in part is
forbidden except with the written permission of HCME.
While every effort is made to ensure the accuracy of
information published, HCME is not responsible for
inaccuracies or omissions. All views expressed are not
necessarily those of HCME.

Hitachi Construction Machinery (Europe) NV
Siciliëweg 5 – haven 5112, 1045 AT Amsterdam
PO Box 59239, 1040 KE Amsterdam, The Netherlands
T: +31-(0)20 44 76 700 F: +31-(0)20 33 44 045
www.hitachicm.eu

KP-EN025EUP