

HITACHI

Reliable solutions

GET more from your **Hitachi machine**

Ground Engaging Tools (GET) for Hitachi excavators and wheel loaders



Ground Engaging Tools (GET)

Hitachi construction equipment is renowned for its reliability, particularly in tough working environments. For even greater levels of productivity and durability, the range of Zaxis medium crawler and wheeled excavators, and ZW wheel loaders, can now be fitted with high-quality ground engaging tools (GET).

Features and benefits



Strong and reliable adapter
Extended operation time, which leads to lower maintenance cost.

Mechanical lock
User-friendly, safe and quick tooth exchange.

Reusable and strong locking pin
Reduced cost for locks and reliable locking function.

Locking ring integrated in the tooth
User-friendly, strong and reliable locking function.

Low profile
Ensures good penetration, which brings lower fuel consumption and less stress on the machine.

Precise fit with large contact surfaces
Extended life time, more teeth per adapter, which leads to lower maintenance cost.

Parts manufactured in Sweden
Consistent high-quality and reduced environmental impact.

Teeth with self-sharpening design and high extent of wear material
Extended operation time which leads to lower production cost.



Manufactured in Sweden using steel castings of the highest quality and advanced technology, the teeth and adapters improve the penetration and overall digging power of Hitachi machines. They are easy to install and remove, safe and robust, and designed to lower maintenance costs.

Medium, large and wheeled excavators

Size		Hitachi model	Max breakout force
GP	HD		
H10	H14	ZX130LC/140W	104 kN
H10	H14	ZX170W	108 kN
H10	H14	ZX160LC	112 kN
H10	H14	ZX190W	123 kN
H14	H18	ZX210LC	158 kN
H14	H18	ZX225USRLC	158 kN
H14	H18	ZX240N	158 kN
H14	H18	ZX220W	158 kN
H18	H23	ZX250LC	188 kN
H23	H29	ZX300LC	202 kN
H29	H29	ZX350LC	246 kN
H33	H43	ZX490LCH	296 kN
H43	H43	ZX530LCH	296 kN
H43	H53	ZX690LCH	369 kN
H53		ZX890LCH	472 kN

* GP means general purpose GET version
 * HD means heavy duty GET version

Medium, large and wheeled excavators: teeth

H10

Type	A mm	B mm	C mm	D mm	E mm	Weight kg
GPE	209	87	10	72	84	3.2
VE	230	87	8	6	84	2.8

H14

Type	A mm	B mm	C mm	D mm	E mm	Weight kg
GPE	242	101	11	83	97	4.9

H18

Type	A mm	B mm	C mm	D mm	E mm	Weight kg
GPE	268	112	12	92	112	6.8
VE	296	112	11	11	108	6.0
AE	292	112	20	109	108	8.5

H23

Type	A mm	B mm	C mm	D mm	E mm	Weight kg
GPE	303	126	14	104	122	9.6
AE	330	126	22	123	12.4	12.4
PE	334	126	13	57	122	9.80

H29

Type	A mm	B mm	C mm	D mm	E mm	Weight kg
GPE	334	139	15	115	134	13.2
AE	363	139	24	136	134	16.5
PE	368	139	14	62	134	13.2

H33

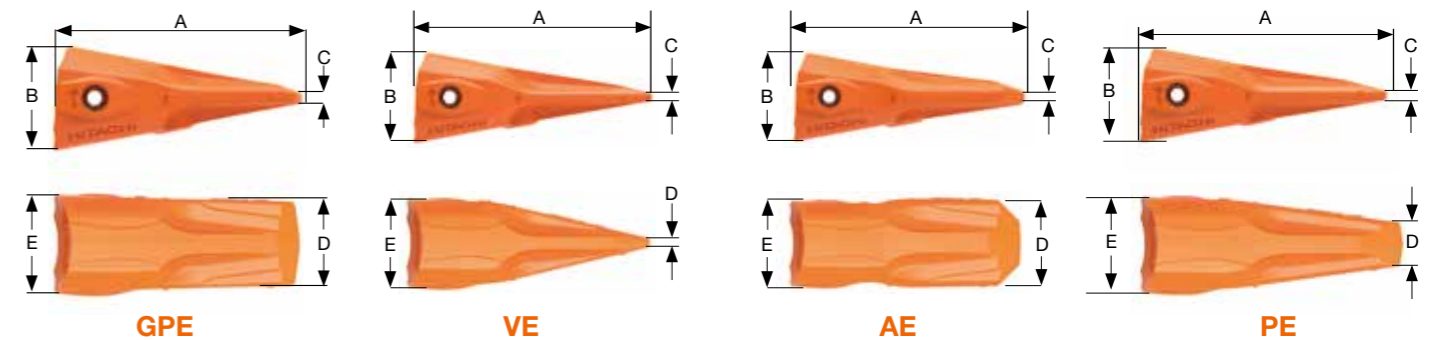
Type	A mm	B mm	C mm	D mm	E mm	Weight kg
GPE	367	153	16	126	147	17.0

H43

Type	A mm	B mm	C mm	D mm	E mm	Weight kg
AE	439	168	29	164	162	29.5
PE	445	168	17	75	162	23.1

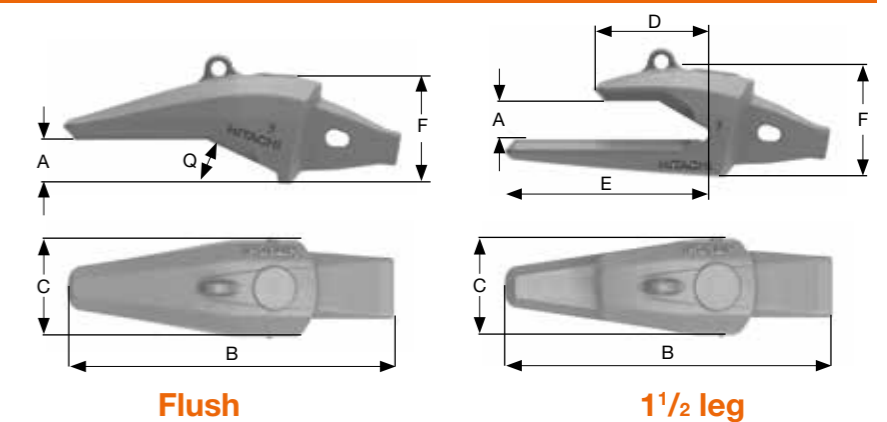
H53

Type	A mm	B mm	C mm	D mm	E mm	Weight kg
AE	483	185	32	164	162	39.5
PE	489	185	19	83	178	31.1



Medium, large and wheeled excavators: adapters

Size	Lip size mm	Type
H10	25	Flush
H10	32	1 1/2 leg
H14	40	
H18	40	
H23	40	
H29	50	
H33	60	
H43	70	
H53	80	



Wheel loaders

Size		Hitachi model	Max breakout force
GP	HD		
H10		ZW140	109 kN
H10		ZW150	108 kN
H10		ZW180	129 kN
H10	H14	ZW220	185 kN
H10	H14	ZW250	186 kN
H14	H14	ZW310 (ZW330)	225 kN
H23	H23	ZW370	261 kN



* GP means general purpose GET version
* HD means heavy duty GET version

Wheel loaders: teeth

H10

Type	A mm	B mm	C mm	D mm	E mm	Weight kg
GPL	209	87	9	72	84	3.5

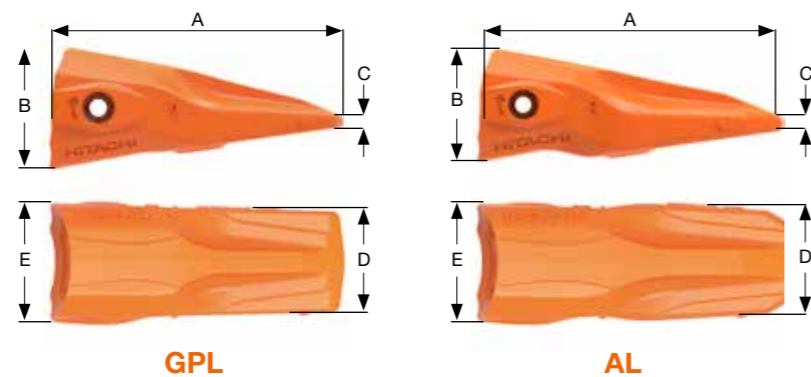
H14

Type	A mm	B mm	C mm	D mm	E mm	Weight kg
GPL	242	101	10	83	97	5.5
AL	270	101	15	85	97	7.4

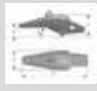
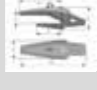
H23

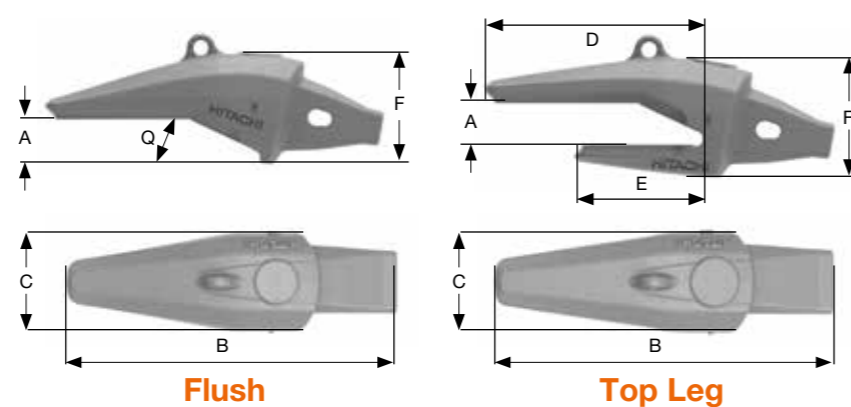
Type	A mm	B mm	C mm	D mm	E mm	Weight kg
AL	339	126	19	107	122	14.6

Size	GPL	AL
H10	✓	
H14	✓	✓
H23		✓



Wheel loaders: adapters

Size	Lip size mm	Type
H10	20-30	Flush 
H14	30-40	1 1/2 leg 
H14	40	
H23	40	



Types of teeth available

Excavators

- GPE** Standard tooth with slim design for optimal penetration and durability in general purpose applications.
- VE** Designed for maximum penetration, this tooth makes light work of hard surface layers and frozen ground.
- AE** Suitable for highly-abrasive soils and rocks such as granite, basalt and sandstone. The design provides maximum wear material with maintained good penetration.
- PE** Penetration tooth with additional body mass and narrow tip combines penetration with impact and abrasion.

Wheel loaders

- GPL** Ideal in both general and abrasive environments, this all-round tooth is popular for its excellent penetration.
- AL** Outstanding wear resistance combined with a high level of penetration. This tooth provides extra protection for the lower part of the adaptor and is ideal for highly abrasive ground conditions.





Telescopic arm excavator

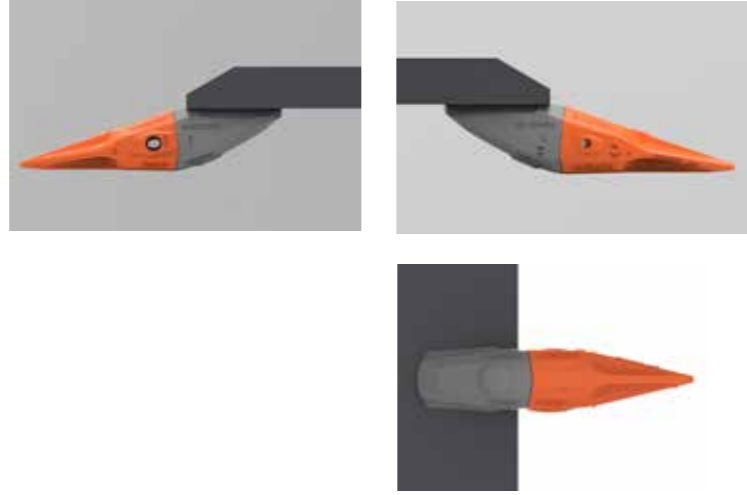
Size	Hitachi model	Max breakout force
GP	ZX130 to ZX350	108kN
H10CSA		

* GP means general purpose GET version

Telescopic arm excavator: teeth

H10

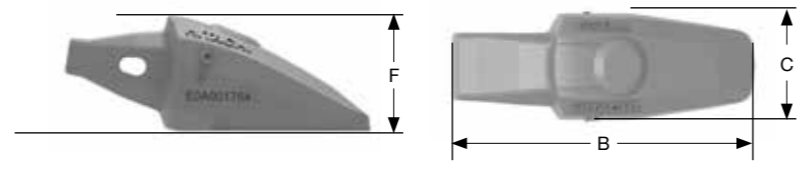
Type	A mm	B mm	C mm	D mm	E mm	Weight kg
GPE	209	87	9	72	84	3.5
VE	230	87	8	6	84	2.8



Size	GPL	VE
H10CSA	✓	✓

Telescopic arm excavator: adapters

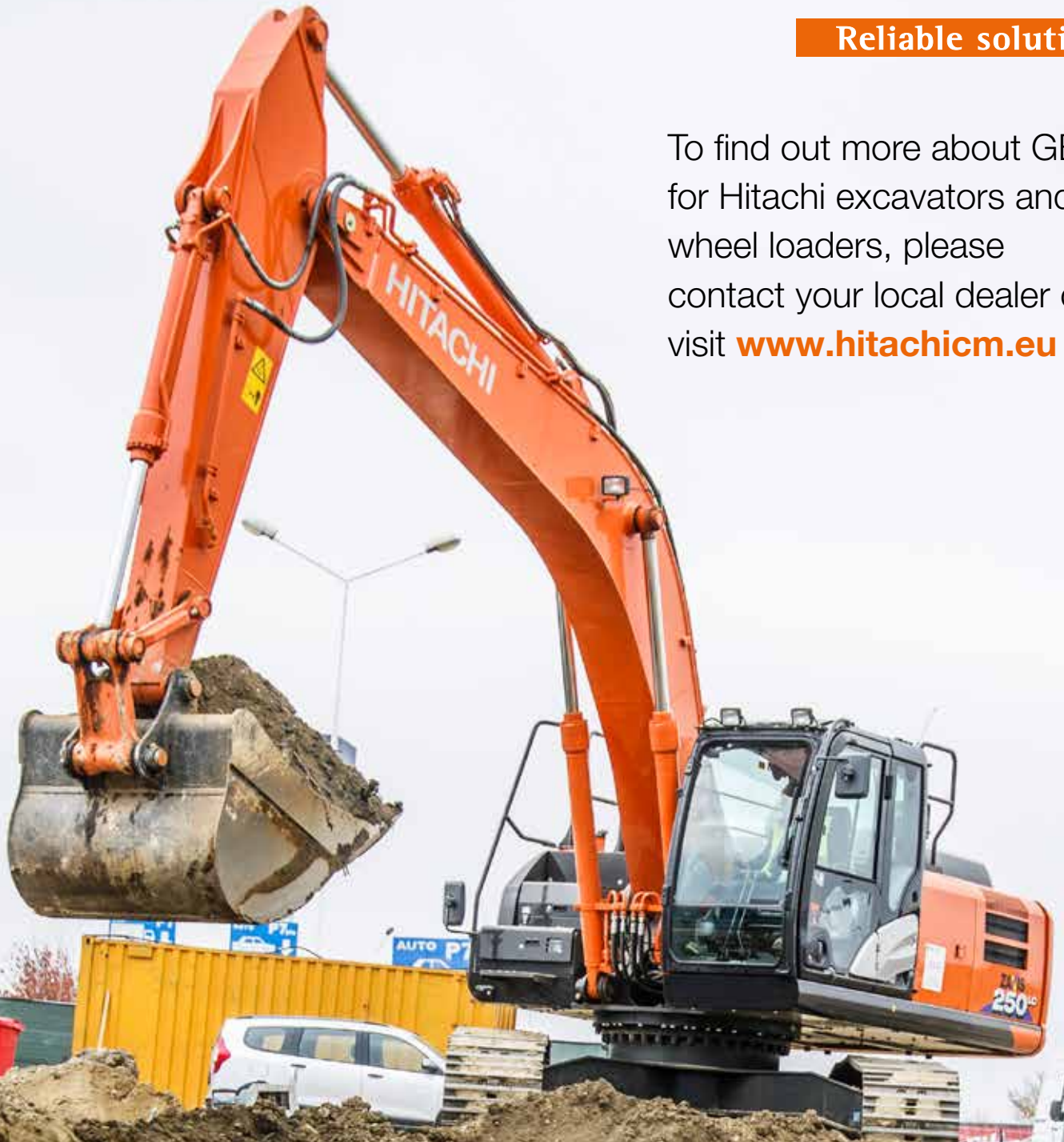
Size	Lip size mm	B mm	C mm	F mm	Weight kg
H10CSA	20-40	236	83	90	6.2



HITACHI

Reliable solutions

To find out more about GET for Hitachi excavators and wheel loaders, please contact your local dealer or visit www.hitachicm.eu



© Hitachi Construction Machinery (Europe) NV (HCME).
All rights reserved. Reproduction in whole or in part is
forbidden except with the written permission of HCME.
While every effort is made to ensure the accuracy of
information published, HCME is not responsible for
inaccuracies or omissions. All views expressed are not
necessarily those of HCME.

Hitachi Construction Machinery (Europe) NV
Siciliëweg 5 – haven 5112, 1045 AT Amsterdam
PO Box 59239, 1040 KE Amsterdam, The Netherlands
T: +31-(0)20 44 76 700 F: +31-(0)20 33 44 045
www.hitachicm.eu

KP-EN022EU