

Sustainability Promotion Initiatives

Our Approach to Sustainability

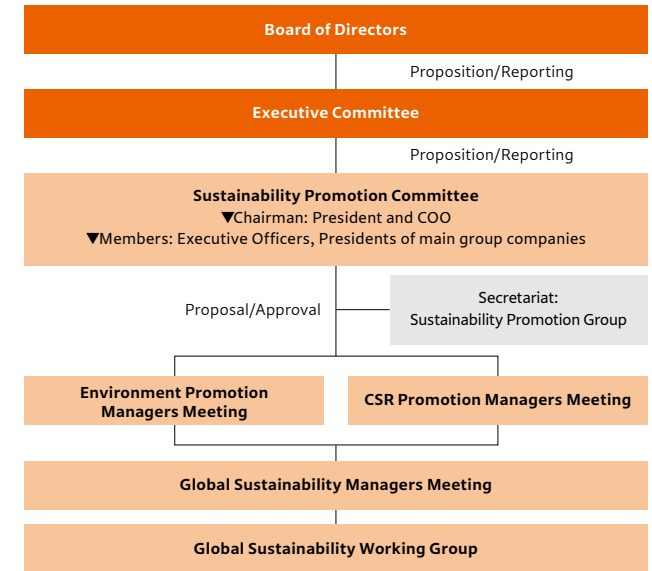
The Hitachi Construction Machinery Group aims to promote sustainability and contribute to the sustainable development of societies by addressing materialities. Under the Sustainability Basic Policy formulated in line with the Hitachi Construction Machinery Group's collective identity, we will contribute to the sustained development of societies and enhance our corporate value through construction machinery.

Sustainability Promotion System

Important sustainability-related issues are discussed at the CSR Promotion Managers Meeting and the Environmental Promotion Managers Meeting, and then reported to the Sustainability Promotion Committee (which meets twice a year) comprising executive officers and presidents of major Group companies. The President and COO chairs the Sustainability Promotion Committee, which deliberates on and approves measures to address climate change and other ESG-related issues pertinent to management decisions. These important ESG issues are discussed and approved by the Executive Committee and the Board of Directors for appropriate monitoring and supervision.

As part of our global approach, we share our policies and direction on sustainability promotion with representatives of overseas Group companies at the Global Sustainability Promotion Managers Meeting and exchange opinions with them. In addition, the Global Sustainability Working Group shares the measures taken in individual countries and regions in accordance with the pre-determined direction and pursues and enhances sustainability initiatives on a global basis.

Sustainability Promotion System



Sustainability Basic Policy

The Hitachi Construction Machinery Group's vision "Ensuring a prosperous land and society for the future. We contribute toward realizing a safe and sustainable society" represents our foundation of a harmonious coexistence with society. Our construction machinery contributes to the development of society by helping to build social infrastructure, thereby enriching the lives of humanity. Mining machinery plays a vital role in providing the minerals that are necessary for our everyday lives and economy, that are also integral in creating reliable solutions for a sustainable future.

Furthermore, our newly defined Mission, "Meet expectations from customers, co-create innovative products, services, solutions and together, we continue to create new values," expresses our purpose today, in order to address the challenges of tomorrow.

To realize this vision, our employees around the world will work together under the Spirit of "Challenge, Customer, and Communication"—strengthening our value chain business, including parts and services, rental, used equipment and parts remanufacturing, in addition to our new product sales business. Together, we aim to improve our corporate value by developing and delivering innovative products, services and solutions that contribute to the success of customers around the world. At the same time, we aim to promote and embed sustainability in our business practices through the materiality listed below.

<Hitachi Construction Machinery Group's Materialities>

Product and technology development contributing to climate change mitigation and adaptation

In response to the impact of climate change on the global environment, we will work to reduce CO₂ emissions in both product development and production processes, and strive to reduce the environmental impact of our entire value chain.

Conversion to a recycling-oriented business model

We will work to shift to a business model that promotes the efficient and cyclical use of resources.

Creating innovative solutions for challenges faced by customers supporting social infrastructure

We will work together with our customers to address the various issues faced in the field, such as safety improvement, productivity improvement, and life-cycle cost reduction, while utilizing cutting-edge technologies.

Strengthening global governance

We will establish an organizational structure that respects human rights and fosters an environment that promotes equality and growth in which all of our employees can feel valued and play an active role, thereby enhancing corporate value over.