

ZAXIS-7G series

HITACHI

Reliable Solutions

# ZAXIS350



## HYDRAULIC EXCAVATOR

Model code	: ZX350-7G / ZX350LC-7G	ZX350H-7G / ZX350LCH-7G
Engine rated power	: 200 kW (268HP)	200 kW (268HP)
Operating weight	: 31 900 - 33 800 kg	34 000 - 34 800 kg
Bucket capacity	: 1.38 - 1.86 m <sup>3</sup>	1.38 - 1.62 m <sup>3</sup>



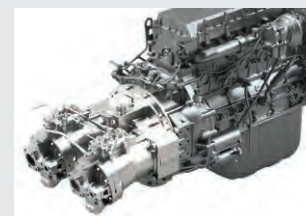


# GET MORE FROM YOUR MACHINE

You're at the heart of Hitachi Construction Machinery's design for its latest range of excavators. To continuously improve on previous generation machines, we've focused on enhancing your profit in business.

We have made cost reduction for our customers our top priority and, in doing so, have achieved reduced fuel consumption. The cab has been redesigned to improve the operator's working environment and controllability, with production also expected to improve. An engine that already has a proven track record of high reliability has been adopted, and we have placed further work in it to make it even more robust. Remote failure diagnosis, monitoring, and OTA (Over The Air - controller rewriting) are also supported to reduce downtime.

## INSIDE



4-5 | MORE FUEL EFFICIENCY



6-7 | BETTER OPERABILITY



8-9 | HIGH DURABILITY AND RELIABILITY



10-11 | SMOOTH MAINTENANCE



12-13 | MACHINE MANAGEMENT

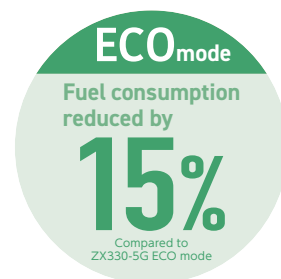
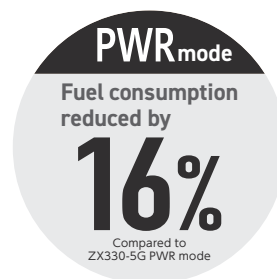


# MORE FUEL EFFICIENCY

Improved HIOSIII hydraulic system matched with a new engine improves the ZX-7G fuel efficiency and fuel cost.

## Reducing fuel consumption

With the reduction of fuel consumption in each mode compared to conventional models, the new model will contribute to increasing your profit.



## HIOS III hydraulic system

The hydraulic system developed was based on the concept of a hydraulic system that fits in-line with a sense of human operation.

✓ Efficient hydraulic control achieves smoother and more speedy movement of front attachments.

## Fine-tuned hydraulic pump control

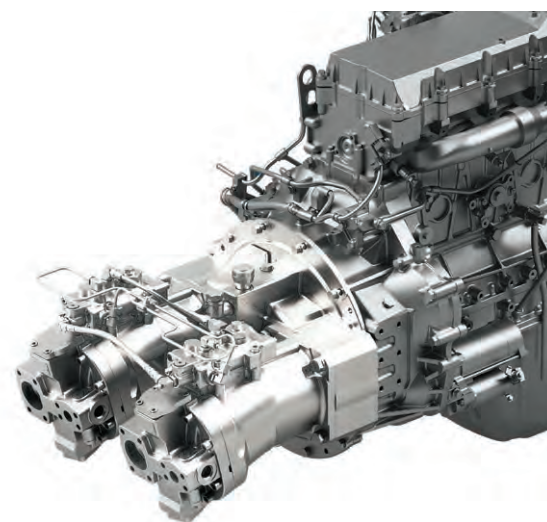
A solenoid valve mounted on the hydraulic system further controls the pump flow rate to reduce unnecessary load on the engine.

✓ Contributing to low fuel consumption operation

## High efficiency engine

A common rail type fuel injection system is used to electronically control fuel quantity and injection timing for more efficiency in fuel combustion.

✓ Contributing to high engine power and low fuel consumption.



## Operation support system for high efficiency

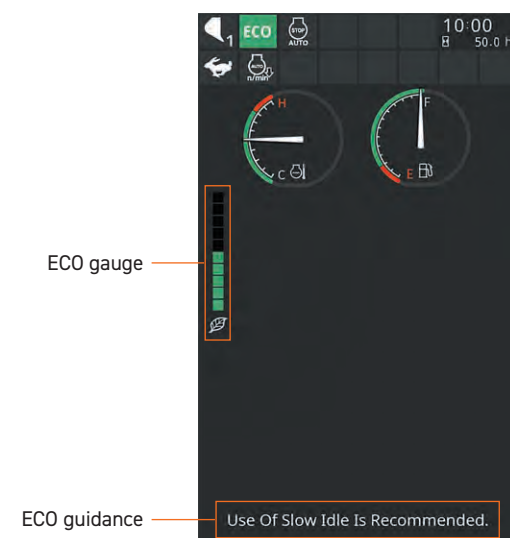
### ECO gauge

A gauge displays the current fuel consumption during an operation with a higher mark on the gauge indicating a lower fuel usage. The eco-gauge helps to support the operator in achieving lower fuel consumption throughout the work required.

### ECO guidance

Prompts the operator to better fuel economy. Messages are also shown while the ECO gauge is displayed.

✓ Prompts operator for better economy





# BETTER OPERABILITY

In the cab of the Zaxis-7G, enhanced comfort and safety features are at your fingertips, offering the power to perform greater productivity with ease as well as reduced fatigue.



Operation is easy with ergonomically designed controls and switches.



Low-reflective color 8" monitor, 42% larger display compared to ZX-5G series. Easier to view and navigate. Optional USB power supply and Bluetooth® available.



New designed pilot shut-off lever  
The newly designed pilot shut-off lever allows easier locking and unlocking with wrist operation.



AERIAL ANGLE (Optional)  
270-degree bird's eye-view camera system is available as an option.

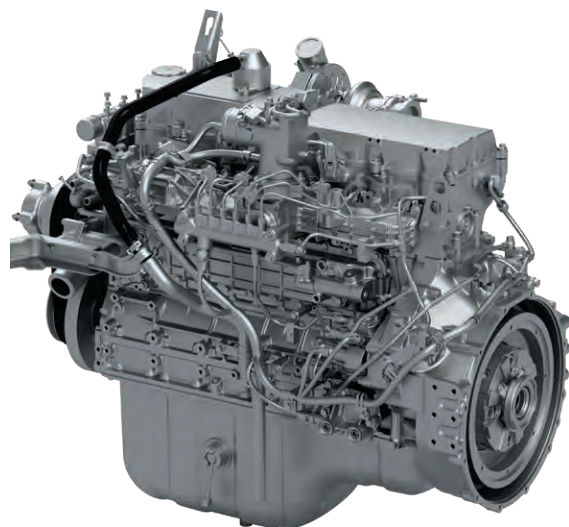


# HIGH DURABILITY AND RELIABILITY

Completing a project on time and on budget depends on the ability of your construction equipment to perform all day, every day. That's why the owners have profited from generations of reliable and durable machinery. Hitachi Construction Machinery develops its machines with constant awareness of the need to further improve long-term reliability. High long-term reliability is good in not only performance all day, every day but also for resale value.

## An engine with improved reliability

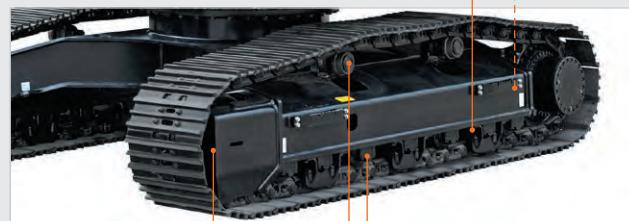
The engine is a highly reliable model that has already been adopted previously. In adopting it for the ZX-7G, we have put in our efforts to further increase durability and to boost your uptime. EGR (Exhaust Gas Recirculation) is removed from the engine, increasing its durability for using low-quality fuel.



✓ Reinforced motor cover

### Enlarged track guard

✓ Reducing wear and damage risks on the track link and lower roller.



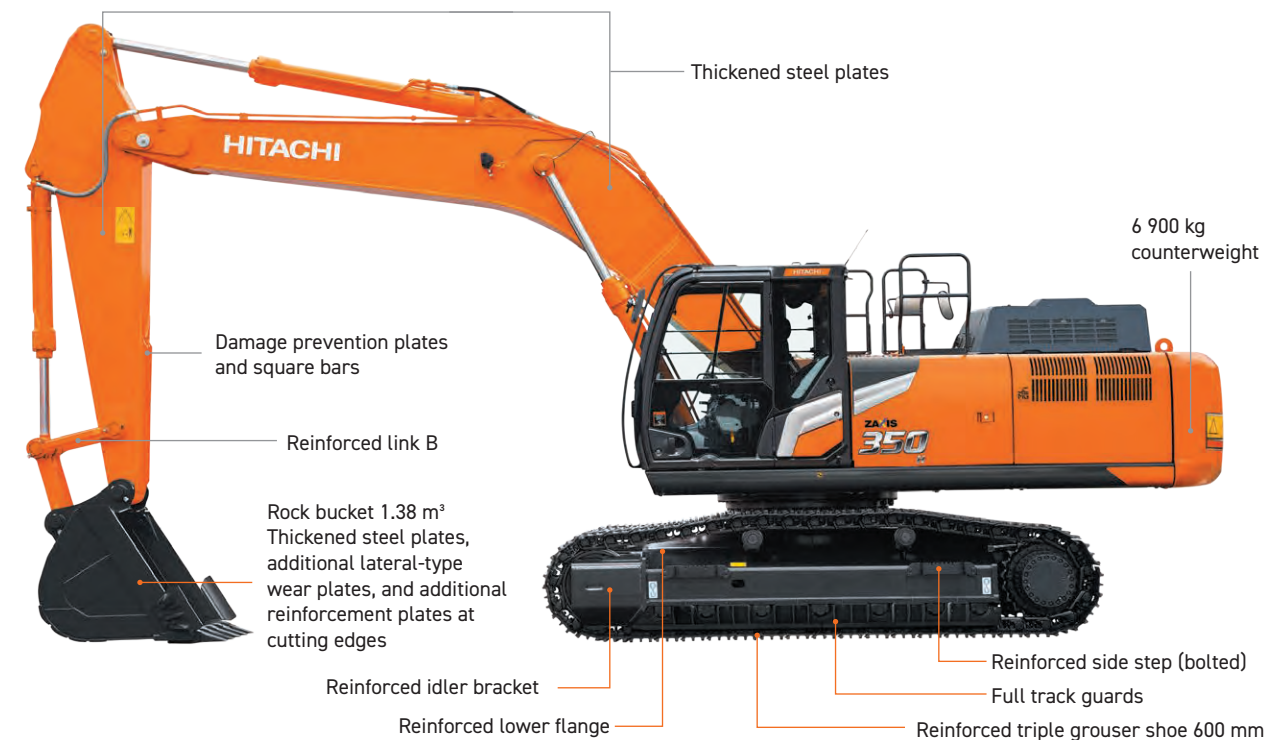
### Structurally improved upper roller, lower roller, and the front idler

✓ Maintains lubrication performance in the roller and improves roller durability



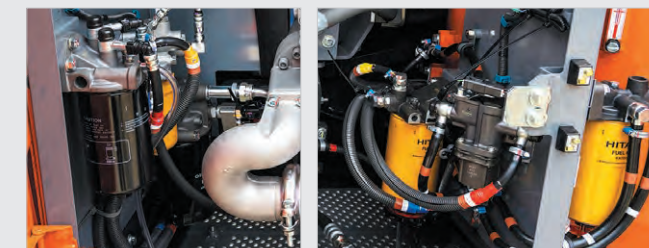
## Heavy-Duty model ZAXIS 350H / 350LCH

The heavy duty model is more durable with reinforced load-bearing points on the excavator



## High reliable fuel circuit

Larger fuel pump and changing filter locaton improve the reliability of the entire fuel circuit and further help to prevent engine problems. Contributing to boost your uptime.



## Reinforced plat form plate

✓ Increased plate strength and deformation-resistant structure



## Equipped with an expansion tank

✓ Improving the reliability of the engine cooling performance





# SMOOTH MAINTENANCE

Regular maintenance is essential for the machine to achieve high performance. ZAXIS excavators are designed for ease of regular maintenance. Simple and easy maintenance keeps the machine in good condition and keeps its high performance.

## Easy to clean radiator/Oil cooler/Inter cooler core



- Dust-proof indoor net**
- ✓ Provided at the front of radiator
  - ✓ Easy to be removed and cleaned



- Cleaning port for radiator/Oil cooler/Inter cooler core**
- ✓ The cover can be opened without the need for any tools
  - ✓ Easy to clean radiator/Oil cooler/Inter cooler core with simple air blowing



- Easy-access air conditioner condenser**
- ✓ The condenser can be opened
  - ✓ Easy to clean radiator/Oil cooler/Inter cooler core with simple air blowing

## Remote lubrication of arm-end pin

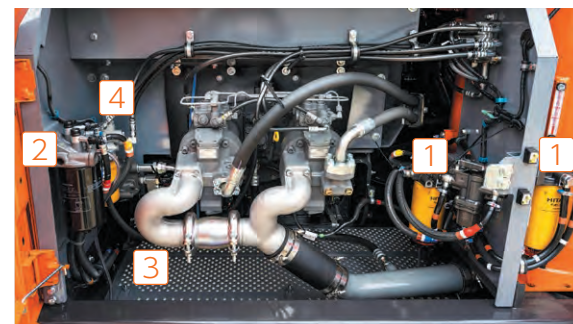
- ✓ Reducing the risk of mud stuck in the lubrication port
- ✓ Performs smooth lubrication



## Easy access to filters

Filter locations are concentrated in the pump room

- 1 Fuel main filter
- 2 Fuel pre-filter with water separator
- 3 Engine oil filter
- 4 Pilot filter



## Handrail (optional)

Handrails have been installed on the platform to allow safer access to the engine and maintenance work around the engine





# MACHINE MANAGEMENT

Hitachi Construction Machinery offers a wide range of after-sales services to help you feel in total control of your fleet and workload. These initiatives give you access to vital data and tools to manage your machine.



**ConSite**  
Consolidated Solution for Construction Sites



A wide range of data on Global e-Service enhances efficiency.

## Data report

Regular reports inform you of the machine's operation status. Emergency reports inform you of alarm information. The stable operation of the machine is further supported with two types of reports visualizing the machine's daily operation status.

## Monthly report

Regular reports on the operating status of each machine.

## Alarm report

If an emergency alarm is generated from a sensor mounted on the machine, its alarm content is reported by e-mail in a timely manner. You can receive it on your computer, mobile phone, or smartphone (communication format is via e-mail).

movie for further info.



## ConSite Air

This is a service solution to diagnose machine status and update software from a remote location using OTA (Over The Air).

- Machine status, including error code display and sensor data, can be checked quickly, reducing downtime due to machine trouble.
- Software updates can be performed remotely, reducing the amount of machine downtime required.



Remote Diagnosis



Remote Software update

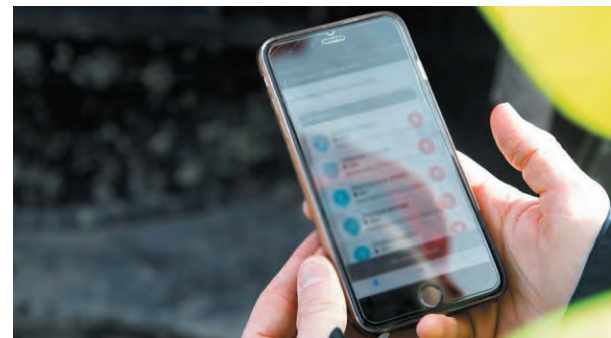
movie for further info.



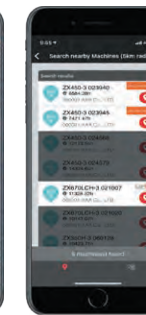
## ConSite Pocket

ConSite Pocket sends you real-time alerts for issues arising with your machine. You'll receive recommendations on what to do and step-by-step help guides. The app also enables you to see the location of your fleet.

- Use your smartphone to check monthly reports, alarm reports, as well as machine operating positions.
- If an alarm report is generated, the system will notify you immediately using a push notification.



Monthly report

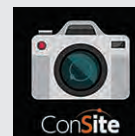


Machine finder



Location information

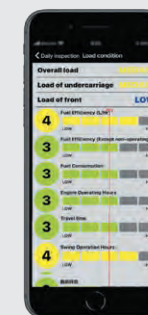
movie for further info.



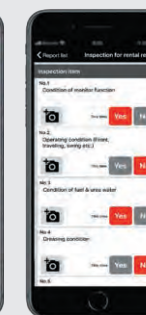
## ConSite Shot

This is a smartphone application that allows you to easily perform daily inspections of your machines and rental warehousing / delivery management.

- You can easily create high-quality inspection reports and share information within your company or with agents etc.
- Customers who have rental machines can also use it during rental warehousing / delivery inspections.



Load condition



Acceptance or delivery inspection of rental machines



Inspection report with condition photo

movie for further info.



## ConSite OIL

This system detects if the oil quality has deteriorated, due to contamination or low viscosity. If this happens, you and your authorized dealer will receive an alert.

movie for further info.





# SPECIFICATIONS

ENGINE	
Model	Isuzu 6HK1
Type	4-cycle water-cooled, common rail direct injection
Aspiration	Turbocharged, intercooled
No. of cylinders	6
Rated power	
ISO 14396 : 2002 gross	200 kW (268HP) at 1 900 min <sup>-1</sup> (rpm)
ISO 9249 : 2007 net	190 kW (254HP) at 1 900 min <sup>-1</sup> (rpm)
Maximum torque	1 069 Nm (109 kgfm) at 1 500 min <sup>-1</sup> (rpm)
Piston displacement	7.790 L
Bore and stroke	115 mm x 125 mm
Batteries	2 x 12 V

HYDRAULIC SYSTEM			
<b>Hydraulic Pumps</b>			
Main pumps	2 variable displacement axial piston pumps		
Maximum oil flow	2 x 288 L/min		
Pilot pump	1 gear pump		
Maximum oil flow	30.2 L/min		
<b>Hydraulic Motors</b>			
Travel	2 variable displacement axial piston motors		
Swing	1 axial piston motor		
<b>Relief Valve Settings</b>			
Implement circuit	34.3 MPa (350 kgf/cm <sup>2</sup> )		
Swing circuit	32.4 MPa (330 kgf/cm <sup>2</sup> )		
Travel circuit	34.3 MPa (350 kgf/cm <sup>2</sup> )		
Pilot circuit	3.9 MPa (40 kgf/cm <sup>2</sup> )		
Power boost	38.0 MPa (338 kgf/cm <sup>2</sup> )		
<b>Hydraulic Cylinders</b>			
	Quantity	Bore	Rod diameter
Boom	2	145 mm	100 mm
Arm	1	170 mm	115 mm
Bucket	1	140 mm	95 mm

UPPERSTRUCTURE	
<b>Revolving Frame</b>	
D-section frame for resistance to deformation.	
<b>Swing Device</b>	
Axial piston motor with planetary reduction gear is bathed in oil. Swing circle is single-row. Swing parking brake is spring-set/hydraulicreleased disc type.	
Swing speed	10.7 min <sup>-1</sup> (rpm)
Swing torque	120 kNm (12 200 kgfm)

UNDERCARRIAGE	
<b>Tracks</b>	
Heat-treated connecting pins with dirt seals. Hydraulic (grease) track adjusters with shock-absorbing recoil springs.	
<b>Numbers of Rollers and Shoes on Each Side</b>	
Upper rollers	2
Lower rollers	7 : ZX350-7G / ZX350H-7G
	8 : ZX350LC-7G / ZX350LCH-7G
Track shoes	45 : ZX350-7G / ZX350H-7G
	48 : ZX350LC-7G / ZX350LCH-7G
Track guards	3 : ZX350-7G / ZX350LC-7G
	Full track guard : ZX350H-7G / ZX350LCH-7G
<b>Travel Device</b>	
Each track driven by 2-speed axial piston motor. Parking brake is spring-set/hydraulic-released disc type. Automatic transmission system: High-Low.	
Travel speeds	High : 0 to 5.0 km/h
	Low : 0 to 3.2 km/h
Maximum traction force	298 kN (30 400 kgf)
Gradeability	70% (35 degree) continuous

SERVICE REFILL CAPACITIES	
Fuel tank	630.0 L
Engine coolant	41.0 L
Engine oil	41.0 L
Swing device	15.7 L
Travel device (each side)	11.0 L
Hydraulic system	340.0 L
Hydraulic oil tank	180.0 L

WEIGHTS AND GROUND PRESSURE								
Operating Weight and Ground Pressure			ZX350-7G*			ZX350LC-7G*		
Boom type			Monoblock			Monoblock		
Shoe type	Shoe width (mm)	Arm length (m)	kg	kPa	kgf/cm <sup>2</sup>	kg	kPa	kgf/cm <sup>2</sup>
Triple grouser	600	2.67	31 900	64	0.66	32 600	61	0.62
		3.20	32 000	65	0.66	32 600	61	0.62
		4.00	32 200	65	0.66	32 800	61	0.63
	700	2.67	32 500	56	0.57	33 100	53	0.54
		3.20	32 500	56	0.57	33 200	53	0.54
		4.00	32 700	57	0.58	33 400	53	0.55
800	2.67	32 900	50	0.51	33 500	47	0.48	
	3.20	32 900	50	0.51	33 600	47	0.48	
	4.00	33 100	50	0.51	33 800	47	0.48	
Reinforced Triple grouser	600	2.67	32 100	65	0.66	32 700	61	0.62
		3.20	32 200	65	0.66	32 800	61	0.63
		4.00	32 400	65	0.67	33 000	62	0.63

\*Including 1.40 m<sup>3</sup> (ISO 7451 : 2007 heaped) bucket weight (1 170 kg) and counterweight (6 350 kg).

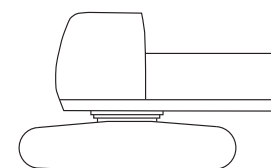
Operating Weight and Ground Pressure								
Boom type			ZX350H-7G**			ZX350LCH-7G**		
Shoe type	Shoe width (mm)	Arm length (m)	kg	kPa	kgf/cm <sup>2</sup>	kg	kPa	kgf/cm <sup>2</sup>
Reinforced Triple grouser	600	2.67	34 000	69	0.70	34 700	65	0.66
	600	3.20	34 100	69	0.70	34 800	65	0.66

\*\*Including 1.38 m<sup>3</sup> (ISO heaped) H-bucket weight (1 340 kg) and counterweight (6 900 kg).

## BASIC MACHINE WEIGHT AND COMPONENTS WEIGHT

### Basic Machine Weight and Overall Width

Excluding front end attachment, fuel, hydraulic oil and coolant etc. Including counterweight.



Shoe width (mm)	ZX350-7G		ZX350LC-7G	
	Weight (kg)	Overall width (mm)	Weight (kg)	Overall width (mm)
600	24 400	3 190	25 000	3 190
700	25 000	3 290	25 600	3 290
800	25 300	3 390	26 000	3 390

Shoe width (mm)	ZX350H-7G		ZX350LCH-7G	
	Weight (kg)	Overall width (mm)	Weight (kg)	Overall width (mm)
600	25 800	3 190	26 500	3 190

### Components Weight

Unit: kg

	ZX350-7G / ZX350LC-7G	ZX350H-7G / ZX350LCH-7G
Counterweight	6 350	6 900
Monoblock boom (with arm cylinder and boom cylinder)	3 700	4 000
Arm 2.67 m (with bucket cylinder)	1 700	1 900
Arm 3.20 m (with bucket cylinder)	1 800	2 000
Arm 4.00 m (with bucket cylinder)	2 000	-
Bucket ISO 7451 : 2007 1.40 m <sup>3</sup>	1 200	-
Bucket ISO 7451 : 2007 1.38 m <sup>3</sup>	-	1 300

## BUCKET AND ARM DIGGING FORCE

Arm length	2.67 m		3.20 m		4.00 m	
	kN	kgf	kN	kgf	kN	kgf
Bucket digging force* ISO 6015 : 2006	246	25 100	246	25 100	246	25 100
Arm crowd force* ISO 6015 : 2006	222	22 600	185	18 900	158	16 100

\* At power boost



# SPECIFICATIONS

## BACKHOE ATTACHMENTS

### ZX350-7G

Bucket	Capacity (m <sup>3</sup> )	Width (mm)		No. of teeth	Weight (kg)	Recommendation		
	ISO7451: 2007 heaped	Without side cutters	With side cutters			Arm 2.67 m	Arm 3.20 m	Arm 4.00 m
Hoe bucket	1.40	1 280	1 410	5	1 150	⊙	⊙	○
	1.62	1 460	1 590	5	1 240	○	○	-
	1.86	1 640	-	5	1 200	□	-	-
(Super V teeth)	1.40	1 280	1 410	5	1 110	⊙	⊙	○
(Level-pin type)	1.40	1 280	1 410	5	1 130	⊙	⊙	○
(Level-pin type)	1.62	1 460	1 590	5	1 240	○	○	-
Reinforced hoe bucket	1.40	1 280	1 410	5	1 360	⊙	⊙	○
	1.62	1 460	1 590	5	1 480	○	○	-
Rock bucket (Super V teeth)	1.38	-	1 360	5	1 330	△	△	-
	(Level-pin type)	1.38	-	1 360	5	1 350	△	△
	(Super V teeth)	1.50	-	1 470	5	1 400	△	△

### ZX350LC-7G

Bucket	Capacity (m <sup>3</sup> )	Width (mm)		No. of teeth	Weight (kg)	Recommendation		
	ISO7451: 2007 heaped	Without side cutters	With side cutters			Arm 2.67 m	Arm 3.20 m	Arm 4.00 m
Hoe bucket	1.40	1 280	1 410	5	1 150	⊙	⊙	⊙
	1.62	1 460	1 590	5	1 240	○	○	□
	1.86	1 640	-	5	1 200	□	-	-
(Super V teeth)	1.40	1 280	1 410	5	1 110	⊙	⊙	⊙
(Level-pin type)	1.40	1 280	1 410	5	1 130	⊙	⊙	⊙
(Level-pin type)	1.62	1 460	1 590	5	1 240	○	○	□
Reinforced hoe bucket	1.40	1 280	1 410	5	1 360	⊙	⊙	⊙
	1.62	1 460	1 590	5	1 480	○	○	□
Rock bucket (Super V teeth)	1.38	-	1 360	5	1 330	△	△	-
	(Level-pin type)	1.38	-	1 360	5	1 350	△	△
	(Super V teeth)	1.50	-	1 470	5	1 400	△	△

## BACKHOE ATTACHMENTS

### ZX350H-7G

Bucket	Capacity (m <sup>3</sup> )	Width (mm)		No. of teeth	Weight (kg)	Recommendation		
	ISO7451: 2007 heaped	Without side cutters	With side cutters			Arm 2.67 m H	Arm 3.20 m H	
Reinforced hoe bucket	1.40	1 280	1 410	5	1 360	⊙	⊙	
	1.62	1 460	1 590	5	1 480	⊙	○	
Rock bucket (Super V teeth)	1.38	-	1 360	5	1 330	△	△	
	(Level-pin type)	1.38	-	1 360	5	1 350	△	△
	(Super V teeth)	1.50	-	1 470	5	1 400	△	△

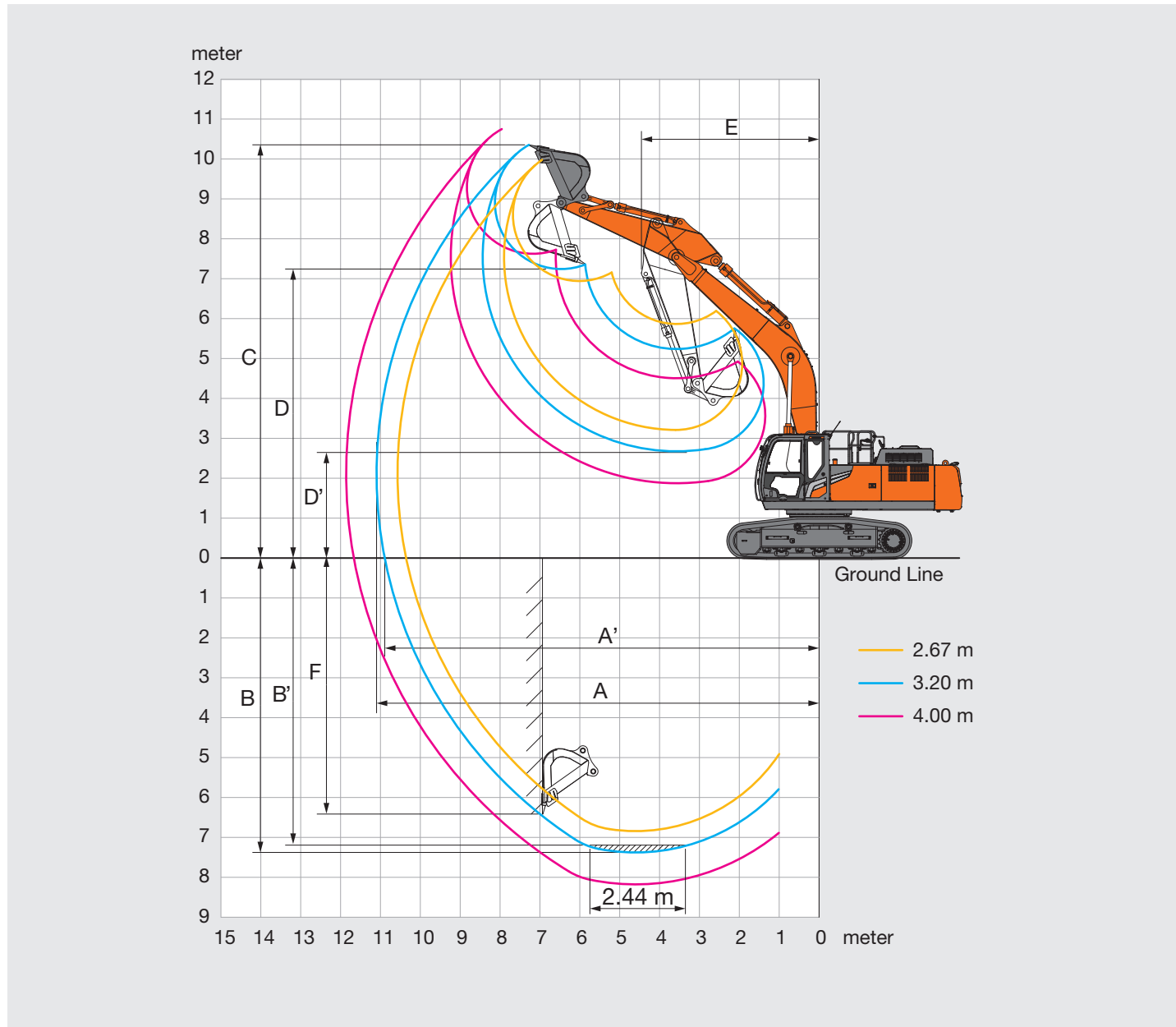
### ZX350LCH-7G

Bucket	Capacity (m <sup>3</sup> )	Width (mm)		No. of teeth	Weight (kg)	Recommendation		
	ISO7451: 2007 heaped	Without side cutters	With side cutters			Arm 2.67 m H	Arm 3.20 m H	
Reinforced hoe bucket	1.40	1 280	1 410	5	1 360	⊙	⊙	
	1.62	1 460	1 590	5	1 480	⊙	○	
Rock bucket (Super V teeth)	1.38	-	1 360	5	1 330	△	△	
	(Level-pin type)	1.38	-	1 360	5	1 350	△	△
	(Super V teeth)	1.50	-	1 470	5	1 400	△	△

- ⊙ Suitable for materials with density of 2 000 kg/m<sup>3</sup> or less
- Suitable for materials with density of 1 600 kg/m<sup>3</sup> or less
- Suitable for materials with density of 1 100 kg/m<sup>3</sup> or less
- △ Rock digging
- Not applicable



## WORKING RANGES

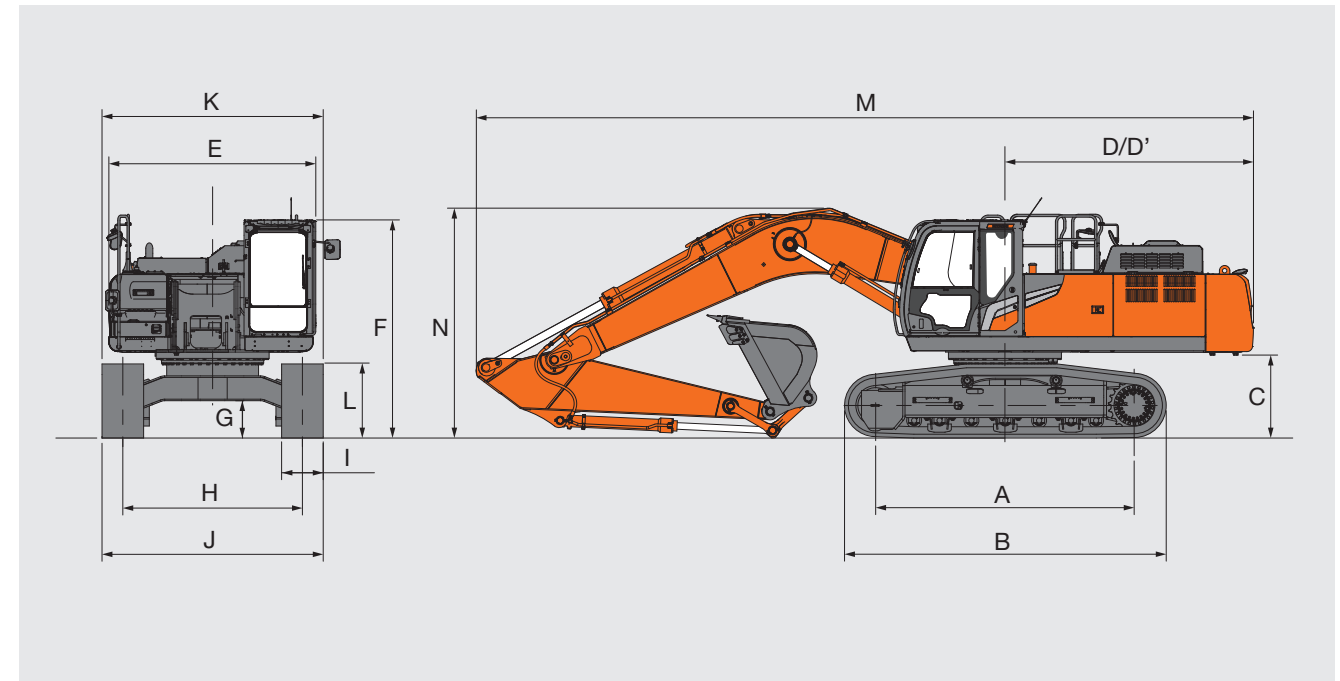


Unit: mm

Arm length	Monoblock boom		
	2.67 m	3.20 m	4.00 m
A Max. digging reach	10 570	11 100	11 860
A' Max. digging reach (on ground)	10 360	10 890	11 670
B Max. digging depth	6 840	7 380	8 180
B' Max. digging depth for 2.44 m level	6 640	7 210	8 040
C Max. cutting height	9 990	10 350	10 750
D Max. dumping height	6 940	7 240	7 630
D' Min. dumping height	3 210	2 680	1 880
E Min. swing radius	4 610	4 460	4 470
F Max. vertical wall digging depth	5 510	6 420	7 270

Excluding track shoe lug

## DIMENSIONS



Unit: mm

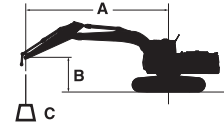
Arm length	Monoblock boom			
	ZX350-7G	ZX350LC-7G	ZX350H-7G	ZX350LCH-7G
A Distance between tumblers	3 730	4 050	3 730	4 050
B Undercarriage length	4 630	4 950	4 640	4 970
*C Counterweight clearance	1 160	1 160	1 160	1 160
D Rear-end swing radius	3 590	3 590	3 590	3 590
D' Rear-end length	3 600	3 600	3 600	3 600
E Overall width of upperstructure	2 990	2 990	2 990	2 990
F Overall height of cab	3 150	3 150	3 150	3 150
*G Min. ground clearance	500	500	500	500
H Track gauge	2 590	2 590	2 590	2 590
I Track shoe width	G 600	G 600	G 600	G 600
J Undercarriage width	3 190	3 190	3 190	3 190
K Overall width	3 190	3 190	3 190	3 190
*L Track height with triple grouser shoes	1 060	1 060	1 070	1 070
M Overall length				
	With Arm 2.67 m	11 350	11 350	11 350
	With Arm 3.20 m	11 220	11 220	11 220
	With Arm 4.00 m	11 330	11 330	-
*N Overall height of boom				
	With Arm 2.67 m	3 520	3 520	3 520
	With Arm 3.20 m	3 310	3 310	3 310
	With Arm 4.00 m	3 590	3 590	3 590

\* Excluding track shoe lug G: Triple grouser shoe



# MACHINE CAPACITIES

- Notes:
1. Ratings are based on ISO 10567 : 2007.
  2. Machine capacity does not exceed 75% of tipping load with the machine on firm, level ground or 87% full hydraulic capacity.
  3. The load point is the center-line of the bucket pivot mounting pin on the arm.
  4. \*Indicates load limited by hydraulic capacity.
  5. 0 m = Ground.



- A: Load radius  
B: Load point height  
C: Machine capacity

For machine capacities, subtract installed attachment and quick hitch weight from machine capacities.  
To determine lifting capacities, apply "Rating over-side or 360 degrees" machine capacities from the table and deduct weight of installed attachment and quick hitch.  
Optional feature may affect machine performance.

## ZX350-7G

Rating over-front Rating over-side or 360 degrees Unit : kg

Conditions	Load point height m	Load radius												At max. reach							
		1.5 m		3.0 m		4.5 m		6.0 m		7.5 m		9.0 m		meter							
Boom 6.40 m Arm 2.67 m Counter Weight 6 350 kg	7.5																				
	6.0						*10 470	9 320	9 080	6 510				8 130	5 830	8.00					
	4.5						*15 090	13 660	*11 830	8 860	8 870	6 320		7 150	5 090	8.58					
	3.0						*18 610	12 450	12 040	8 340	8 600	6 070		6 660	4 720	8.87					
	1.5													6 520	4 590	8.89					
	0 (Ground)						17 920	11 530	11 300	7 670	8 180	5 680		6 710	4 700	8.65					
	-1.5			*13 890	*13 890	17 950	11 560	11 230	7 610	8 140	5 650			7 310	5 110	8.13					
	-3.0			*22 600	*22 600	*17 520	11 750	11 350	7 720					8 660	6 020	7.26					
	-4.5			*17 240	*17 240	*13 630	12 160							*10 130	8 300	5.88					
-6.0																					
Boom 6.40 m Arm 3.20 m Counter Weight 6 350 kg	7.5																				
	6.0								*9 060	6 610				*6 310	5 230	8.58					
	4.5								*11 070	9 020	8 960	6 390	6 660	4 750	*6 330	4 630	9.12				
	3.0								*17 360	12 830	12 200	8 480	8 660	6 120	6 540	4 630	6 110	4 320	9.39		
	1.5								18 400	11 940	11 670	8 000	8 380	5 860	6 400	4 500	5 990	4 210	9.42		
	0 (Ground)								17 960	11 560	11 340	7 700	8 180	5 670	6 310	4 420	6 130	4 290	9.19		
	-1.5			*13 320	*13 320	17 880	11 490	11 200	7 570	8 090	5 590			6 590	4 610	8.70					
	-3.0	*15 640	*15 640	*21 080	*21 080	18 020	11 620	11 250	7 620	8 150	5 650			7 610	5 300	7.90					
	-4.5			*20 290	*20 290	*15 370	11 940	11 510	7 850					*9 860	6 860	6.66					
-6.0																					
Boom 6.40 m Arm 4.00 m Counter Weight 6 350 kg	7.5													*5 030	*5 030	8.63					
	6.0								*8 030	6 740	*6 800	4 910		*4 880	4 510	9.41					
	4.5								*8 790	6 490	6 740	4 810		*4 880	4 040	9.91					
	3.0								*15 260	13 330	*11 620	8 650	8 740	6 180	6 560	4 640	*5 020	3 790	10.16		
	1.5								*18 500	12 200	11 790	8 090	8 400	5 870	6 380	4 480	5 280	3 690	10.18		
	0 (Ground)								*8 060	*8 060	17 990	11 560	11 330	7 680	8 140	5 630	6 240	4 340	5 370	3 740	9.97
	-1.5	*8 100	*8 100	*12 210	*12 210	17 700	11 320	11 090	7 460	7 980	5 480	6 160	4 270	5 700	3 960	9.53					
	-3.0	*12 710	*12 710	*17 650	*17 650	17 720	11 330	11 040	7 420	7 950	5 450			6 400	4 440	8.80					
	-4.5	*18 210	*18 210	*23 960	23 330	*17 240	11 550	11 180	7 540	8 100	5 600			7 820	5 410	7.71					
-6.0			*17 350	*17 350	*12 860	12 020	*9 030	7 950					*8 850	7 840	6.06						

## ZX350LC-7G

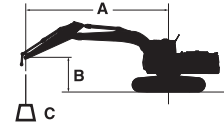
Rating over-front Rating over-side or 360 degrees Unit : kg

Conditions	Load point height m	Load radius												At max. reach											
		1.5 m		3.0 m		4.5 m		6.0 m		7.5 m		9.0 m		meter											
Boom 6.40 m Arm 2.67 m Counter Weight 6 350 kg	7.5																								
	6.0													*10 470	9 510	*9 740	6 650			9 180	5 960	8.00			
	4.5													*15 090	13 950	*11 830	9 050	10 030	6 460			8 070	5 210	8.58	
	3.0													*18 610	12 730	*13 430	8 530	9 750	6 210			7 540	4 830	8.87	
	1.5																						7 390	4 710	8.89
	0 (Ground)																						7 620	4 820	8.65
	-1.5					*13 890	*13 890	*19 600	11 840	12 930	7 800	9 280	5 790										8 310	5 240	8.13
	-3.0					*22 600	*22 600	*17 520	12 030	12 030	7 910												9 870	6 170	7.26
	-4.5					*17 240	*17 240	*13 630	12 440														*10 130	8 490	5.88
-6.0																									
Boom 6.40 m Arm 3.20 m Counter Weight 6 350 kg	7.5																								
	6.0																								
	4.5																								
	3.0																								
	1.5																								
	0 (Ground)																								
	-1.5					*13 320	*13 320	*20 170	11 770	12 900	7 760	9 230	5 740												
	-3.0	*15 640	*15 640	*21 080	*21 080	*18 530	11 900	12 950	7 810	9 290	5 790														
	-4.5			*20 290	*20 290	*15 370	12 220	*11 590	8 040																
-6.0																									
Boom 6.40 m Arm 4.00 m Counter Weight 6 350 kg	7.5																								
	6.0																								
	4.5																								
	3.0																								
	1.5																								
	0 (Ground)																								
	-1.5	*8 100	*8 100	*12 210	*12 210	*20 440	11 600	12 790	7 650	9 120	5 620	7 010	4 380	6 480	4 060	9.53									
	-3.0	*12 710	*12 710	*17 650	*17 650	*19 500	11 620	12 740	7 610	9 090	5 600			7 280	4 550	8.80									
	-4.5	*18 210	*18 210	*23 960	23 880	*17 240	11 830	12 880	7 740	9 250	5 740			8 910	5 550	7.71									
-6.0			*17 350	*17 350	*12 860	12 300	*9 030	8 140					*8 850	8 030	6.06										



# MACHINE CAPACITIES

- Notes:
1. Ratings are based on ISO 10567 : 2007.
  2. Machine capacity does not exceed 75% of tipping load with the machine on firm, level ground or 87% full hydraulic capacity.
  3. The load point is the center-line of the bucket pivot mounting pin on the arm.
  4. \*Indicates load limited by hydraulic capacity.
  5. 0 m = Ground.



A: Load radius  
B: Load point height  
C: Machine capacity

For machine capacities, subtract installed attachment and quick hitch weight from machine capacities.  
To determine lifting capacities, apply "Rating over-side or 360 degrees" machine capacities from the table and deduct weight of installed attachment and quick hitch.  
Optional feature may affect machine performance.

## ZX350H-7G

Rating over-front Rating over-side or 360 degrees Unit : kg

Conditions	Load point height m	Load radius												At max. reach		
		1.5 m		3.0 m		4.5 m		6.0 m		7.5 m		9.0 m				
																meter
Boom 6.40 m H	6.0							*10 250	9 820	*9 510	6 830			8 540	6 100	8.00
Arm 2.67 m H	4.5					*14 810	14 420	*11 580	9 320	9 320	6 620			7 490	5 310	8.58
Counter Weight 6 900 kg	3.0					*18 230	13 090	12 680	8 750	9 030	6 350			6 980	4 910	8.87
	1.5							12 160	8 290	8 750	6 090			6 830	4 780	8.89
	0 (Ground)					18 850	12 090	11 870	8 030	8 580	5 930			7 020	4 890	8.65
	-1.5			*13 800	*13 800	18 890	12 120	11 800	7 960	8 540	5 890			7 660	5 320	8.13
	-3.0			*22 040	*22 040	*17 090	12 340	11 930	8 080					9 090	6 290	7.26
	-4.5			*16 720	*16 720	*13 240	12 790							*9 810	8 710	5.88
	-6.0															
Boom 6.40 m H	6.0									*8 820	6 920			*6 190	5 460	8.58
Arm 3.20 m H	4.5					*10 810	9 480	9 410	6 690	6 970	4 940			*6 210	4 820	9.12
Counter Weight 6 900 kg	3.0					*16 980	13 490	*12 480	8 880	9 080	6 390	6 830	4 810	6 370	4 480	9.39
	1.5					19 350	12 510	12 250	8 360	8 770	6 110	6 680	4 670	6 240	4 360	9.42
	0 (Ground)					18 870	12 100	11 890	8 030	8 550	5 900	6 580	4 580	6 390	4 440	9.19
	-1.5			*13 210	*13 210	18 780	12 020	11 740	7 900	8 460	5 810			6 880	4 780	8.70
	-3.0	*15 530	*15 530	*20 970	*20 970	*18 060	12 160	11 790	7 950	8 520	5 880			7 960	5 510	7.90
	-4.5			*19 710	*19 710	*14 940	12 520	*11 230	8 210					*9 530	7 160	6.66
	-6.0															

## ZX350LCH-7G

Rating over-front Rating over-side or 360 degrees Unit : kg

Conditions	Load point height m	Load radius												At max. reach								
		1.5 m		3.0 m		4.5 m		6.0 m		7.5 m		9.0 m										
																meter						
Boom 6.40 m H	6.0													*10 250	9 970	*9 510	6 940			*9 440	6 200	8.00
Arm 2.67 m H	4.5					*14 810	14 640	*11 580	9 470	*10 020	6 730			8 430	5 410	8.58						
Counter Weight 6 900 kg	3.0					*18 230	13 310	*13 140	8 900	10 200	6 460			7 860	5 010	8.87						
	1.5									13 900	8 440	9 920	6 210			7 710	4 870	8.89				
	0 (Ground)							*20 170	12 320	13 600	8 180	9 730	6 040			7 940	4 990	8.65				
	-1.5			*13 800	*13 800	*19 160	12 350	13 520	8 110	9 690	6 010			8 670	5 420	8.13						
	-3.0			*22 040	*22 040	*17 090	12 560	*13 170	8 230					*10 290	6 410	7.26						
	-4.5			*16 720	*16 720	*13 240	13 010							*9 810	8 860	5.88						
	-6.0																					
Boom 6.40 m H	6.0													*8 820	7 040					*6 190	5 550	8.58
Arm 3.20 m H	4.5					*10 810	9 630	*9 450	6 800	*7 350	5 030			*6 210	4 910	9.12						
Counter Weight 6 900 kg	3.0					*16 980	13 710	*12 480	9 030	10 260	6 510	7 700	4 900	*6 430	4 570	9.39						
	1.5					19 480	12 730	*13 920	8 510	9 940	6 220	7 550	4 760	*6 880	4 450	9.42						
	0 (Ground)							*20 230	12 320	13 620	8 180	9 710	6 020	7 450	4 670	9.19						
	-1.5			*13 210	*13 210	*19 690	12 250	13 460	8 050	9 610	5 930			7 790	4 870	8.70						
	-3.0	*15 530	*15 530	*20 970	*20 970	*18 060	12 390	13 520	8 100	9 680	5 990			9 020	5 620	7.90						
	-4.5			*19 710	*19 710	*14 940	12 740	*11 230	8 360					*9 530	7 300	6.66						
	-6.0																					



● : Standard equipment ○ : Optional equipment - : Not applicable

ENGINE	ZX350-7G / ZX350LC-7G	ZX350H-7G / ZX350LCH-7G
Air cleaner double filters	●	●
Alternator 50 A	●	●
Auto idle system	●	●
Auto shut-down control	●	●
Cartridge-type engine oil filter	●	●
Cartridge-type fuel main filter	●	●
Cartridge-type fuel pre-filter with water separator	●	●
Cold fuel resistance valve	●	●
ConSite OIL (sensor)*	●	●
Dry-type air filter with evacuator valve (with air filter restriction indicator)	●	●
Dust-proof indoor net	●	●
ECO/PWR mode control	●	●
Electrical fuel feed pump	●	●
Engine oil drain coupler	●	●
Expansion tank	●	●
Fan guard	●	●
Fuel cooler	●	●
Isolation-mounted engine	●	●
Maintenance free pre-cleaner	○	○
Radiator, oil cooler and intercooler	●	●

HYDRAULIC SYSTEM	ZX350-7G / ZX350LC-7G	ZX350H-7G / ZX350LCH-7G
Auto power lift	●	●
ConSite OIL (sensor)*	○	○
Control valve with main relief valve	●	●
High mesh full flow filter	●	●
High mesh full flow filter with restriction indicator	○	○
One extra port for control valve	●	●
Pilot filter	●	●
Power boost	●	●
Suction filter	●	●
Work mode selector	●	●

CAB	ZX350-7G / ZX350LC-7G	ZX350H-7G / ZX350LCH-7G
All-weather sound suppressed steel cab	●	●
Auto control air conditioner	●	●
Bluetooth® integrated radio	●	●
Console height adjustment	●	●
CRES VII (center pillar reinforced structure) cab	●	●
Drink holder with hot and cool function	●	●
Electric double horn	●	●
Engine shut-off switch	●	●
Equipped with reinforced, tinted (green color) glass windows	●	●
Evacuation hammer	●	●
Floor mat	●	●
Footrest	●	●
Front guard : mesh (lower)	○	○
Front guard : mesh (lower & upper)	○	○
Front guard : mesh (lower), vertical bar (upper)	○	○
Front guard : vertical bar (lower & upper)	○	○
Front window washer (1 point)	●	●
Glove compartment	●	●
Hands-free calling device	○	○
Hot and cool box	●	●
Intermittent windshield wipers	●	●
Key cylinder light	●	●
LED room light	●	●
Magazine rack	●	●
OPG front guard Level I (ISO10262:1998) compliant	○	○
OPG front guard level II (ISO10262:1998) compliant	○	○
OPG top guard Level I (ISO10262:1998) compliant	○	○
OPG top guard Level II (ISO10262:1998) compliant	○	○
Pilot shut-off lever	●	●
Power outlet 12 V	○	○
Power outlet 24 V	●	●
Rain guard (without OPG front guard)	○	○
Rear tray	●	●
Retractable seat belt	●	●
ROPS (ISO12117-2:2008) compliant cab	●	●
ROPS (ISO12117-2:2008) non compliant cab	○	○
Rubber radio antenna	●	●
Seat : non suspension (fabric)	●	●
Seat : mechanical suspension seat	○	○
Seat adjustment part : backrest, armrest, height and angle, slide forward / back	●	●
Seat belt reminder	●	●
Short wrist control levers	●	●
Smartphone holder	●	●
USB power supply	○	○
Windows on front, upper, lower and left side can be opened	●	●
2 speakers	●	●
4 fluid-filled elastic mounts	●	●
8 inch monitor	●	●

MONITOR SYSTEM	ZX350-7G / ZX350LC-7G	ZX350H-7G / ZX350LCH-7G
Alarms: overheat, engine warning, engine oil pressure, alternator, minimum fuel level, hydraulic filter restriction, air filter restriction, work mode, overload, etc	●	●
Alarm buzzers: overheat, engine oil pressure, overload, trouble, etc	●	●
Display of meters: water temperature, hour, fuel rate, clock, etc	●	●
Other displays: work mode, auto-idle, glow, rear view monitor, operating conditions, etc	●	●
35 languages selection	●	●

LIGHTS	ZX350-7G / ZX350LC-7G	ZX350H-7G / ZX350LCH-7G
Additional boom LED light with cover	○	○
Additional cab roof front LED lights	○	○
Additional cab roof rear LED lights	○	○
LED lights for camera (side and rear view camera)	○	○
2 working LED lights	●	●

UPPER STRUCTURE	ZX350-7G / ZX350LC-7G	ZX350H-7G / ZX350LCH-7G
AERIAL ANGLE (270-degree view camera system)	○	○
Batteries	●	●
Counterweight 6 350 kg	●	-
Counterweight 6 900 kg	-	●
Electric fuel refilling pump with auto stop	○	○
Electric fuel refilling pump with auto stop and filter	○	○
Fuel level float	●	●
Hydraulic oil level gauge	●	●
Lockable fuel refilling cap	●	●
Lockable machine covers	●	●
Lockable tool box	●	●
Platform handrail	●	●
Platform handrail (additional)	○	○
Rear view camera	○	○
Skid-resistant plates	●	●
Swing parking brake	●	●
Undercover	●	●
Undercover 6.0 mm reinforced	○	●
Utility space	●	●
2 way disconnect switch	●	●

● : Standard equipment ○ : Optional equipment - : Not applicable

UNDERCARRIAGE	ZX350-7G / ZX350LC-7G	ZX350H-7G / ZX350LCH-7G
Bolt-on sprocket	●	●
Full track guard	-	○
Greasing type track adjuster	●	●
Reinforced track links with pin seals	●	●
Shoe: 600 mm triple grouser	●	-
Shoe: 600 mm triple grouser reinforced	○	●
Shoe: 700 mm triple grouser	○	○
Shoe: 800 mm triple grouser	○	○
Towing hook	●	●
Track undercover	○	○
Travel direction mark on track frame	●	●
Travel motor covers	●	●
Travel parking brake	●	●
Upper and lower rollers	●	●
3 track guards (each side)	●	-
4 tie down hooks	●	●

FRONT ATTACHMENTS	ZX350-7G / ZX350LC-7G	ZX350H-7G / ZX350LCH-7G
Arm tip remote lubrication	●	●
Arm 2.67 m	○	-
Arm 2.67 m H	-	○
Arm 3.20 m	●	-
Arm 3.20 m H	-	●
Arm 4.00 m	○	-
Boom 6.40 m	●	-
Boom 6.40 m H	-	●
Bucket 1.40 m³ (ISO7451 : 2007 heaped)	●	-
Bucket 1.38 m³ rock (ISO7451 : 2007 heaped)	○	●
Casted bucket link A	●	●
Centralized lubrication system	●	●
Dirt seal on all bucket pins	●	●
Flanged pin	●	●
HN bushing	●	●
Reinforced link B	-	●
Reinforced resin thrust plate	●	●
WC (tungsten-carbide) thermal spraying	●	●
Welded bucket link A	○	○

ATTACHMENTS	ZX350-7G / ZX350LC-7G	ZX350H-7G / ZX350LCH-7G
Attachment basic piping	○	○
Breaker and crusher piping	○	○
High mesh full flow filter with restriction indicator	○	○
Line filter	○	○
Parts for breaker and crusher	○	○
2 pump combined flow for attachment basic piping	○	○

MISCELLANEOUS	ZX350-7G / ZX350LC-7G	ZX350H-7G / ZX350LCH-7G
ConSite	○	○
Global e-Service	●	●
Onboard information controller	●	●
Standard tool kit	●	●

Standard and optional equipment may vary by country, so please consult authorized dealer for details.  
\* Engine oil and hydraulic oil monitoring sensor.



Lined area for notes on page 26, consisting of 25 horizontal lines.

Lined area for notes on page 27, consisting of 25 horizontal lines.



---

Before using a machine with a satellite or tele-communication system, please make sure that the satellite or tele-communication system complies with local regulations, safety standards and legal requirements. If not so, please make modifications accordingly.

---

These specifications are subject to change without notice.

Illustrations and photos show the standard models, and may or may not include optional equipment, accessories, and all standard equipment with some differences in color and features.

Before using, please read and understand the Operator's Manual for proper operation.